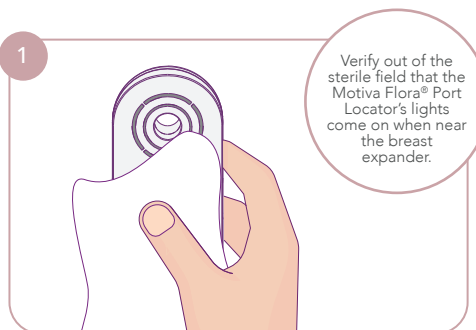


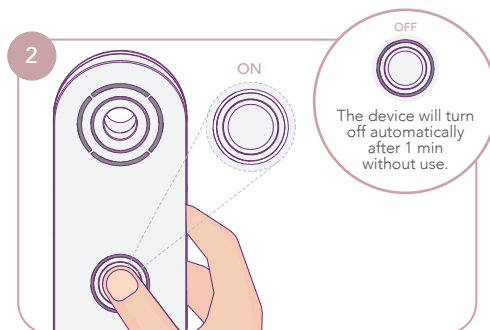
Motiva Flora® Port Locator

Quick Reference Guide

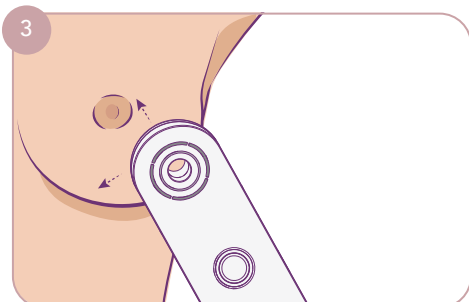
www.motiva.health



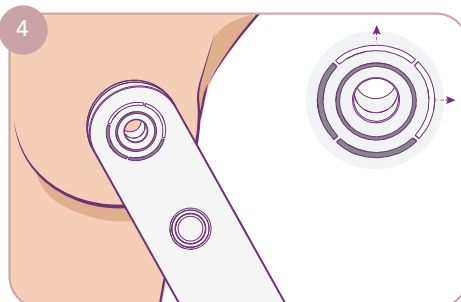
Clean with alcohol until no visible soil remains, and then disinfect using a lint-free cotton cloth with 70–90% isopropyl alcohol keeping the surface wet for at least 1 minute prior to use. NEVER use abrasive products or solvents.



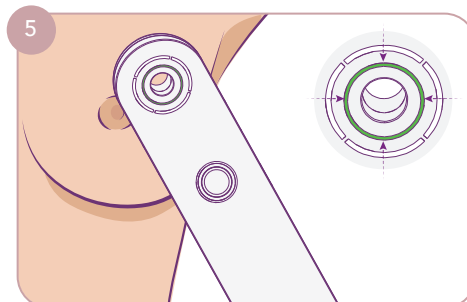
Turn on the Port Locator by pressing the button and release once the white light ring is turned ON.



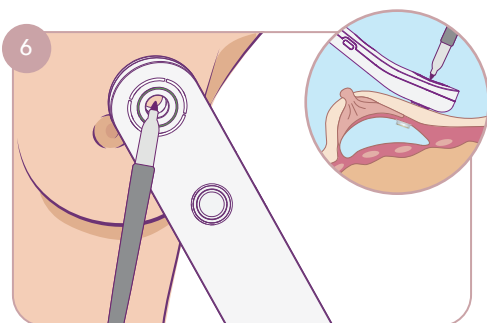
Place the device near as close as possible to the breast surface to obtain the best results in locating the injection port



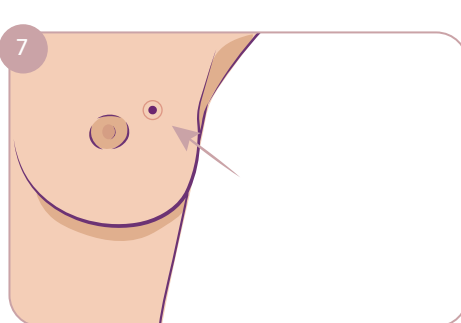
White lights will turn on guiding the location of the port.



Once the injection port is located, a green light ring will turn on.



Hold the device steady and mark the location of the injection through the opening of the device with a surgical marker perpendicular to the breast skin and/or pressing down firmly on the device to create a temporary indentation on the skin where the port is located.

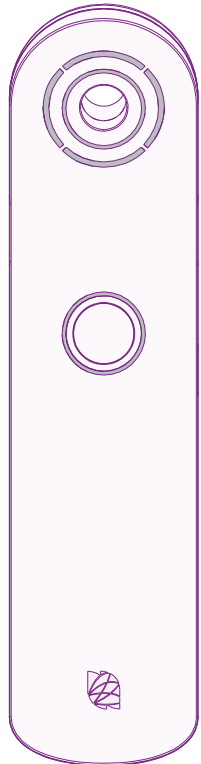


Remove the port locator and use the marked point or the center of the indentation on the skin as guidance for the injection site.



Quick Reference Guide

Motiva Flora® Port Locator

Reference image:
DEVICE OFF

	DEVICE ON & PORT LOCATION			BATTERY STATUS			WARNING
DEVICE STATUS	ON	PORT LOCATION	PORT LOCATED	LOW BATTERY	CHARGING	CHARGED	INTERFERENCE
INDICATOR LIGHTS							
	OFF	PARTIALLY ON: Fixed white	ON: Fixed green Fixed white	OFF	OFF	OFF	OFF
STATUS LIGHT							
	ON: Fixed white	ON: Fixed white	ON: Fixed white	ON: Blinking orange	ON: Blinking blue	ON: Fixed blue	ON: Fixed red

Please refer to the Motiva Flora® Port Locator Directions for Use, for more detailed and complete instructions prior to using the device. Not following the safety instructions may result in damage to the device and the patient. This quick reference guide is intended as an educational tool.

ES Traducción disponible en las Instrucciones de Uso. DE Übersetzung in der Gebrauchsanweisung verfügbar. FR Traduction disponible dans le Mode d'emploi. NL Vertaling beschikbaar in de gebruiksaanwijzing. BG Превод е наличен в Насоките за употреба. HR Prijevod dostupan u Uputama za upotrebu. EL Η μετάφραση είναι διαθέσιμη στις Οδηγίες Χρήσης. CS Překlad je uveden v Pokynech pro použití. DA Oversættelsen kan findes i brugsanvisningen. SV Översättning finns i bruksanvisningen. HU A fordítás a használati utasításban található. IT Traduzione disponibile nelle Istruzioni per l'uso. LV Tulkojums ir pieejams lietošanas instrukcijā. PL Tłumaczenie dostępne w instrukcjach użytkowania. PT Tradução disponível nas Instruções de Utilização. RO Traducerea este disponibilă în Instrucțiunile de utilizare. SK Preklad je k dispozícii v návode na použitie. SL Prevod je na voljo v navodilih za uporabo. KO 사용 지침에서 번역된 내용을 이용하실 수 있습니다. AR تمامي لغات " يوفى ةرفوتم ةم ةرت لآ ". "م ادغت سالا". TH มีคำแปลอยู่ในคำแนะนำสำหรับการใช้งาน. PT (BR) Tradução disponível nas Instruções de Uso. TR Çeviri Kullanma Kılavuzunda bulunmaktadır.